



Jenny Ellis

November 21, 1947 - October 19, 2020

Jenny Delores Ellis age 72 of 103 Rouse Street Honea Path passed Monday at AnMed Medical Health Center. She was born in Baltimore Maryland and was the daughter of the late Louis and Martha Durant. She was a member of Mt. Horbe AME Church. Survivors include two daughters Stacey Shaw of Baltimore Maryland and Joan Tate of Honea Path, four sisters Delores (Chris) Geter, Valerie Thompson, Sharon Bowlding and Betty (Andre) Eldridge all of Baltimore Maryland, 10 grandchildren and 9 great-grandchildren, she was preceded in death by her husband Odell Ellis, and two sons Michael Shaw Jr., and Antonio Shaw. Funeral services will be held Saturday 12:00 Noon at Holloway's Funeral Home Chapel. Burial will be Thursday October 29, 2020 at M.J. Dolly Cooper Cemetery. The family is at the home. Holloway's Funeral Home is in charge of arrangements.

Cemetery Details

M.J. Dolly Cooper Cemetery

140 Inway Drive
Anderson, SC 29621

Previous Events

Service

OCT **24**. 12:00 PM - 1:00 PM (ET)

Holloway's Funeral Home - Belton SC
101 Holloway Blvd
Belton, SC 29627
(864) 338-5200

Tribute Wall



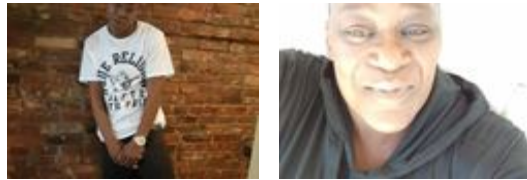
“ *Holloway's Funeral Home created a Tribute Video in memory of Jenny Ellis*



Holloway's Funeral Home - October 22, 2020 at 05:01 PM



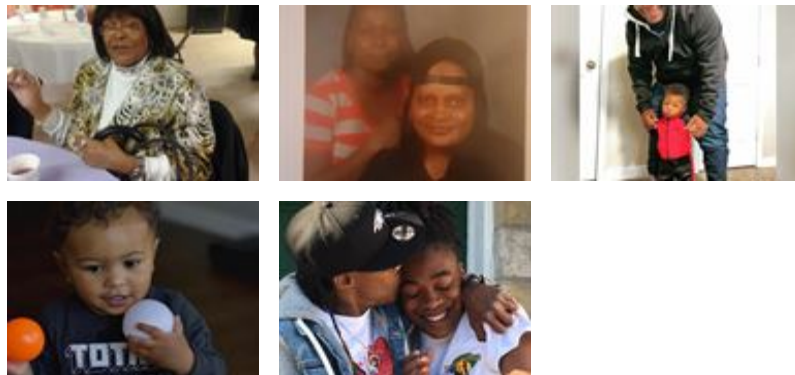
“ *2 files added to the album Life Tributes*



Holloway's Funeral Home - October 21, 2020 at 12:57 PM



“ *31 files added to the album Life Tributes*



Holloway's Funeral Home - October 21, 2020 at 11:53 AM